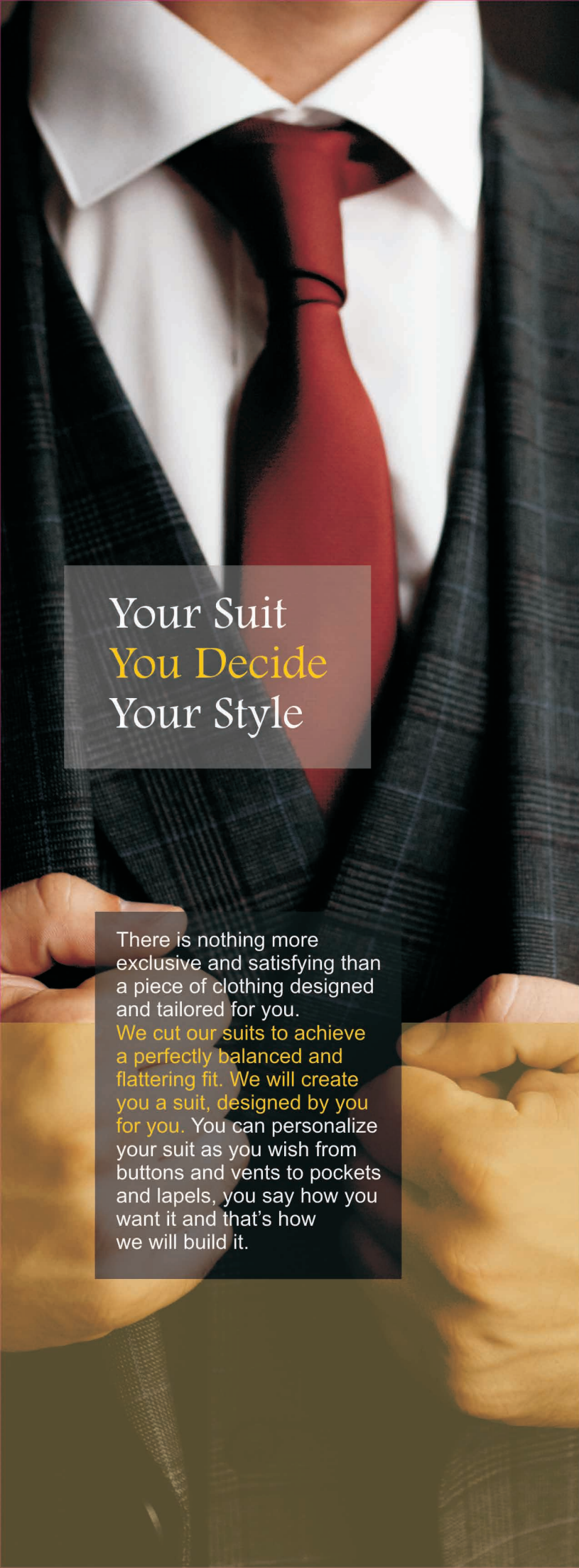




SUIT STYLE GUIDE

Made for You

The New Language of Menswear



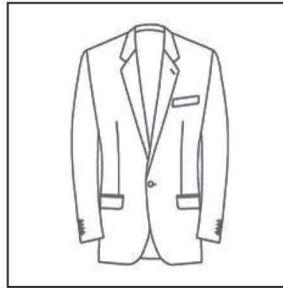
Your Suit
You Decide
Your Style

There is nothing more exclusive and satisfying than a piece of clothing designed and tailored for you. We cut our suits to achieve a perfectly balanced and flattering fit. We will create you a suit, designed by you for you. You can personalize your suit as you wish from buttons and vents to pockets and lapels, you say how you want it and that's how we will build it.

Jacket Styles

Choose from a variety of options to design your Jacket.

Single Breasted



SB 1 Button



SB 2 Button

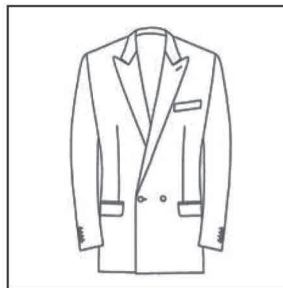


SB 3 Button



SB 4 Button

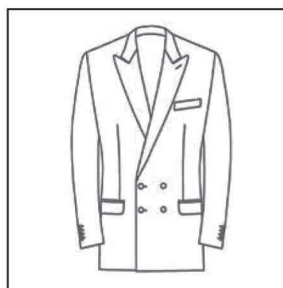
Double Breasted



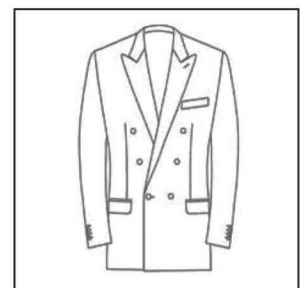
DB 2-1 Button



DB 4-1 Button



DB 4-2 Button

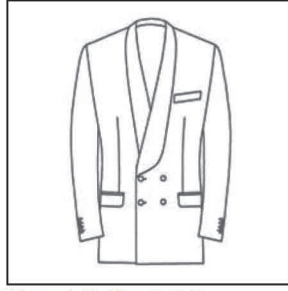


DB 6-1 Button

Double Breasted **Alternative Styles**



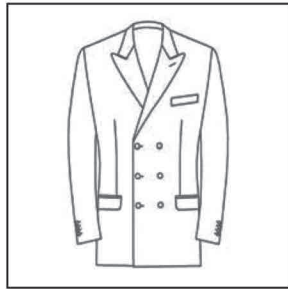
Shawl Collar 2-1 Button



Shawl Collar 2-2 Button



DB 6-2 Button

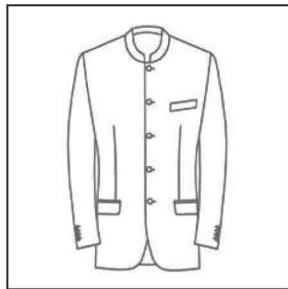


DB 6-3 Button

Single Breasted **Alternative Styles**



Mandarin Collar 4 Button

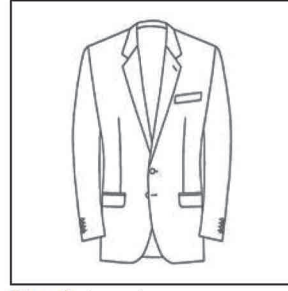


Mandarin Collar 5 Button

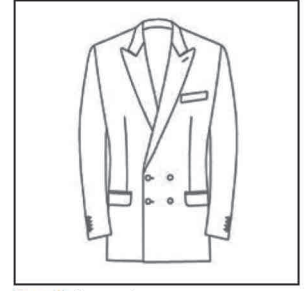


Shawl Collar 1 Button

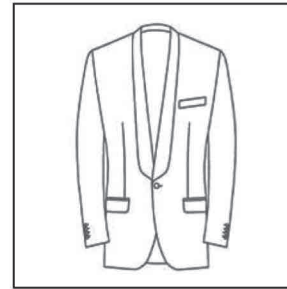
Lapel Styles



Notch Lapel



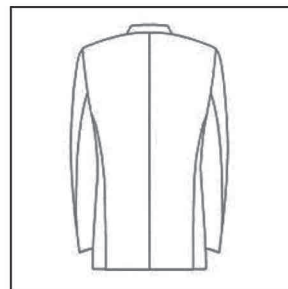
Peak Lapel



Shawl Lapel

We never compromise on quality. Leave the innovation and quality to us, while setting your own journey, and a unique wardrobe to take along with it. This is your moment, made to order.

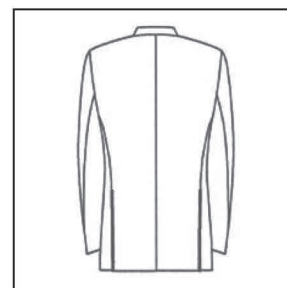
Jacket Vent Styles



Normal No Vent



Normal Center Vent



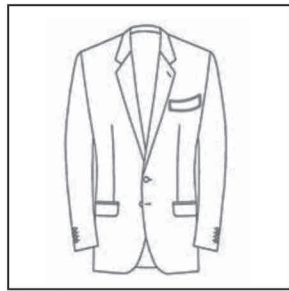
Normal Side Vents

MADE FOR YOU

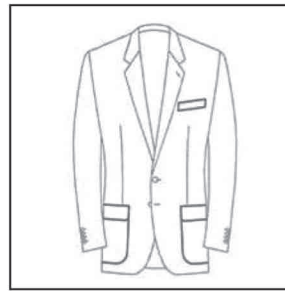
Breast Pocket Styles



Welt Breast



Barchetta Breast



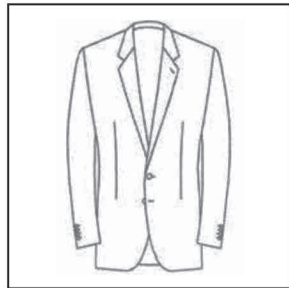
Flapped Patch



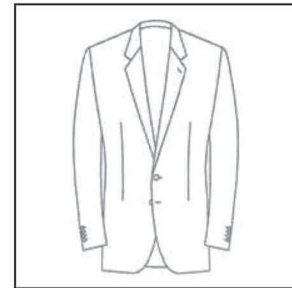
Un flapped Patch



Patch Breast



No Pocket



No Pockets

Lower Pocket Styles



Straight Flap



Slanted Flap



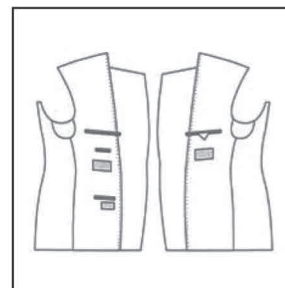
Straight Jetted



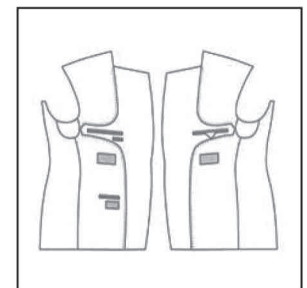
Slanted Jetted

Find a style
you love, and we'll
help you make it
one of a kind.

Jacket Facing



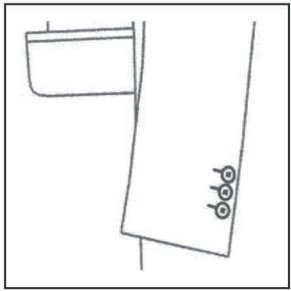
Plain Facing



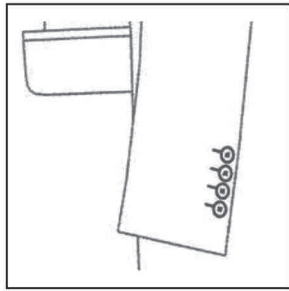
Framed Facing

A tongue, made from the external suit fabric, encircles the main inside jacket pockets to provide extra strength and Longevity.

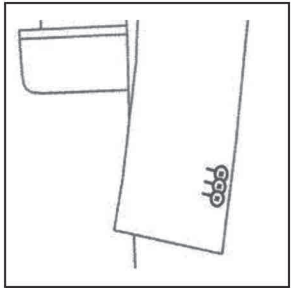
Cuff Styles



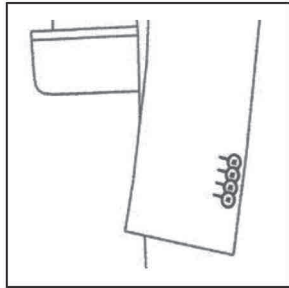
Sham Cuff 3 Buttons



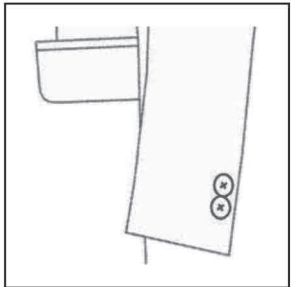
Sham Cuff 4 Buttons



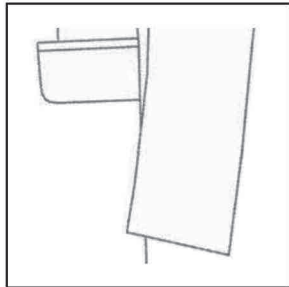
Sham Cuff 3 Kissing Buttons



Sham Cuff 4 Kissing Buttons



Closed Seam 2 Big Buttons



Closed Seam No Buttons

Tuxedo Styles

Choose from Black, Grey or White lapel for your Dinner jacket.



Satin Lapel

As Unique As You Want It. The choices are yours, right down to the very last detail.

Jacket Extras

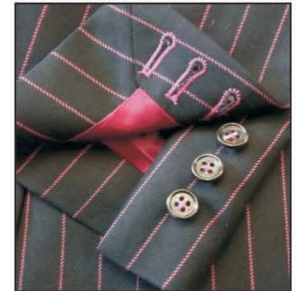
Add style extras to your Jacket. From cuff design to stitching style, each option adds a personal touch to your individual style.



Personal Monogram



Prick Stitching



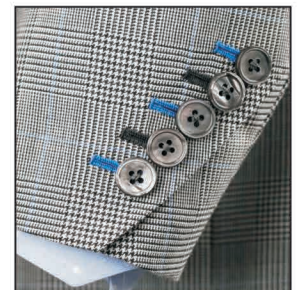
Working Button Cuffs



Contrasting Piping



Under Collar Felt



Contrasting Button Holes



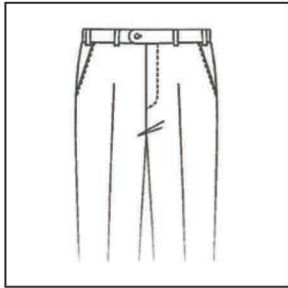
Outside Ticket
Phone Pocket



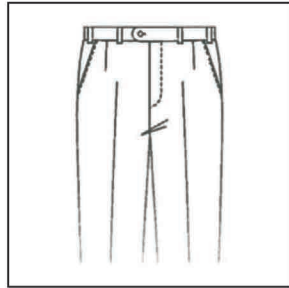
Half Lined

Pants Styles

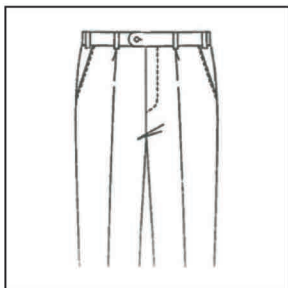
Suit pants should extend the line of the jacket. From plain-front to pleated, there is a variety of pants design options for your suit.



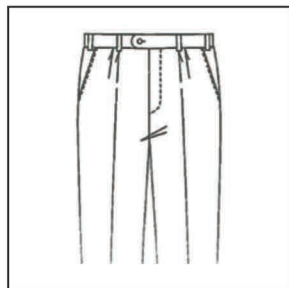
Plain Front No Dartseam



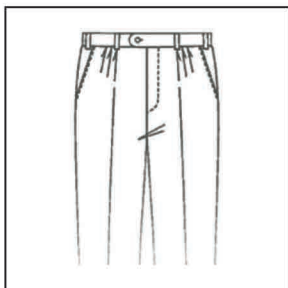
Plain Front w/ Dartseam



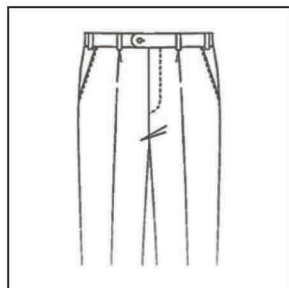
1 Pleat (Reversed)



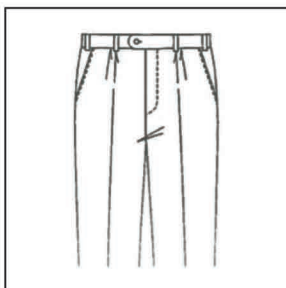
2 Pleats (Reversed)



3 Pleats (Reversed)

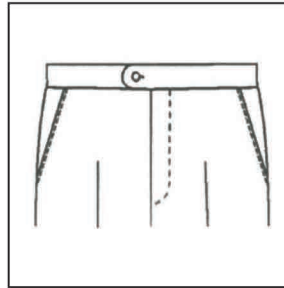


1 Pleat (Inward)

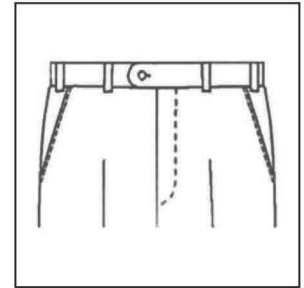


2 Pleats (Inward)

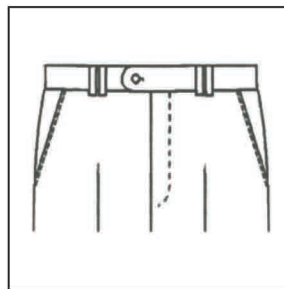
Pants Waistband



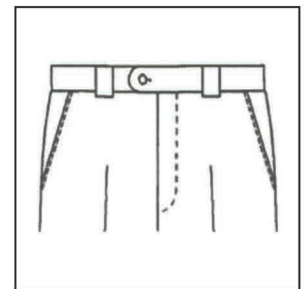
No Belt Loops



Belt Loops

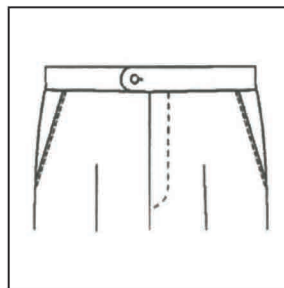


Double Loops

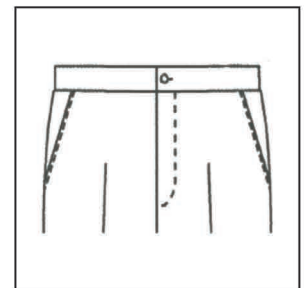


Wide Loops

Pants Fastening



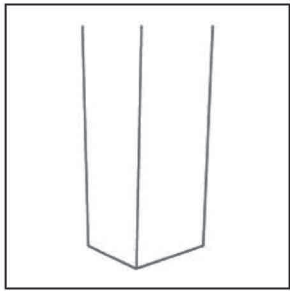
With Extension



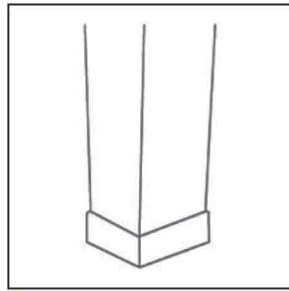
No Extension

Inspired by the modern gentleman who expects to look fresh, energetic and sharp throughout the day, while also expressing his distinct personality. We understand these demands, which is why we tailored our garments to ensure comfort, versatility and timelessness regardless of the season or occasion.

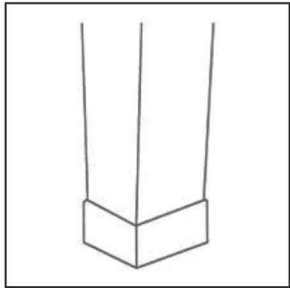
Pants Bottoms



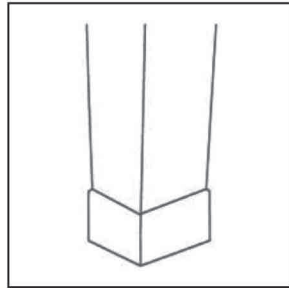
No Turnup [Standard]



3cm Turnup



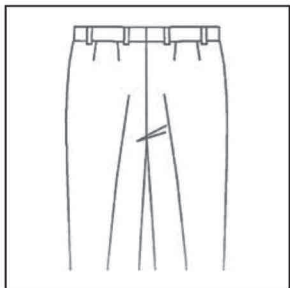
4cm Turnup



5cm Turnup

Hip Pockets

Available on right, left or both sides.



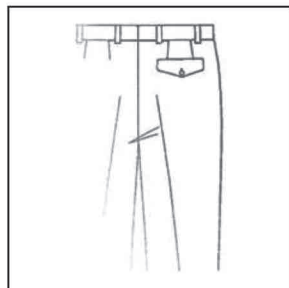
No Pocket



Jetted Pocket w/ Button

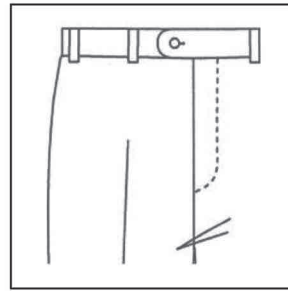


Welted Pocket w/ Button

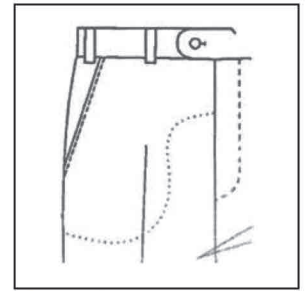


Welted Pocket w/ Flap

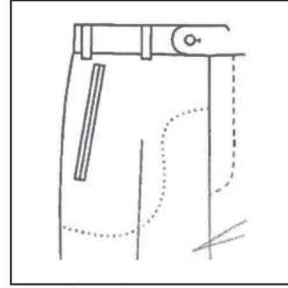
Front Pockets



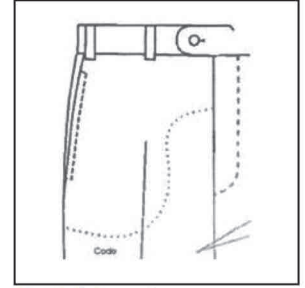
No Pocket



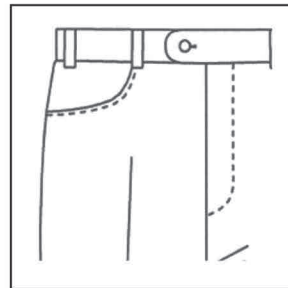
Slanted Pocket



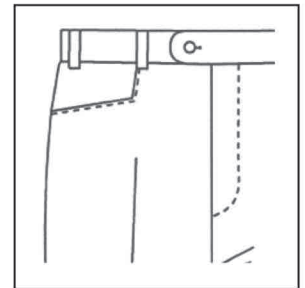
Jetted Pocket



Straight Pocket



Rounded Pocket*



Frogmouth Pocket*

*Not compatible with pleats

Pants Extras



Adjustable Side Tabs

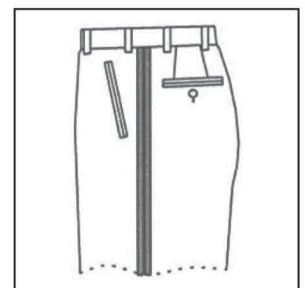


Suspender Buttons

Tuxedo Pants



Single Stripe



Double Stripe

We'll craft your custom-made garments and deliver your unique look within 4 weeks. Style takes time but not too much time - in around 4 weeks and the waiting is over, time to make your mark.

Vest Styles

The vest adds dignity to the single-breasted suit. It is a stylish way to keep your tie in place and your shirt looking neat and tidy.

Vest Styles



5 Button No Lapels Pointed



6 Button No Lapels Pointed



6 Button No Lapels Rounded



5 Button No Lapels Straight



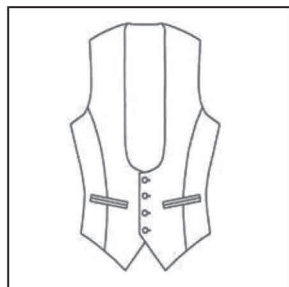
5 Button Notch Lapels Pointed



6-3 Button Shawl Collar Straight



4 Button Round Neck Straight



4 Button Round Neck Pointed

Vest Back Styles

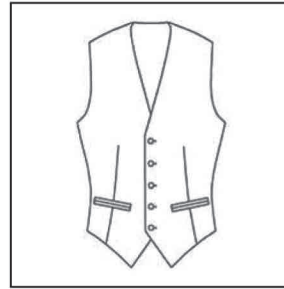


Lining Back w/ Buckle

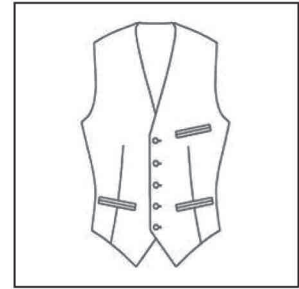


Cloth Back No Buckle

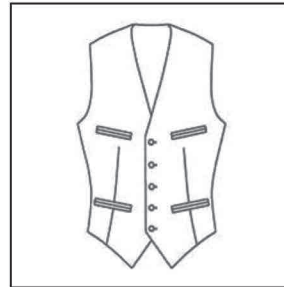
Vest Pockets



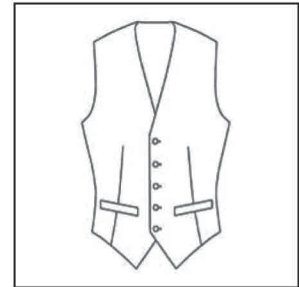
Jetted 2 Pockets



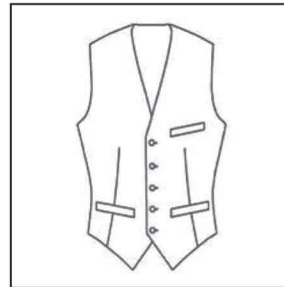
Jetted 3 Pockets



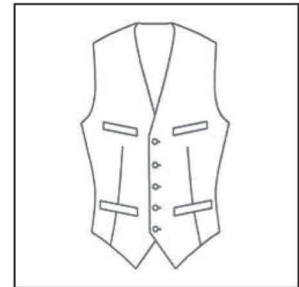
Jetted 4 Pockets



Welt 2 Pockets



Welt 3 Pockets



Welt 4 Pockets

An Alternative To Fast Fashion. Each garment is pre-ordered and built uniquely for its lucky owner. Not only do made to measure clothes fit correctly, so last longer, a personally tailored item will also be treasured. Better value for you, better news for the planet.