

# Measurement Manual



**Have a local tailor measure you up.**

1. Print off page 2-5 of the form.
2. Get measured by your local tailor.
3. Enter measurements online.

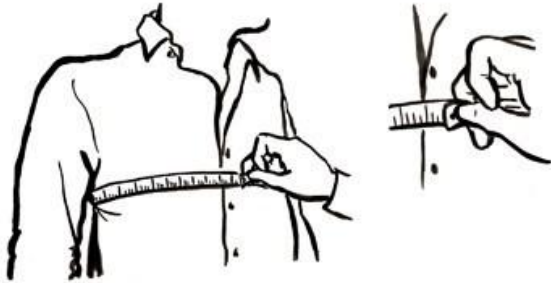
This form is intended to use by a professional tailor only and shouldn't be used for self-measurements. If you need a printable self-measurement form then please email for assistance.

We prefer you use our easy-to-follow online measurement process. Our measuring methods are unique to us and differ from the measuring methods used at a traditional tailor. If a tailor measures you the way that suits his tailoring style, it may cause discrepancies and ill-fitting suit.

### Note to Tailors:

These are the actual body measurements.

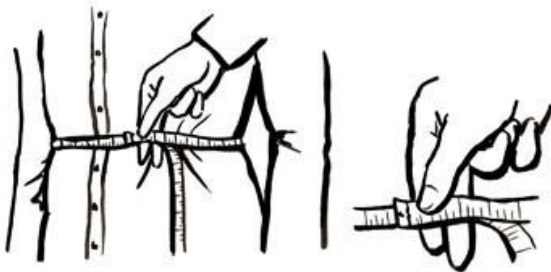
#### Chest Circumference



Ask customer to empty chest pockets and breathe normally. Measure all the way around his chest at its widest point, roughly at the level of the nipples.

Inches: \_\_\_\_\_

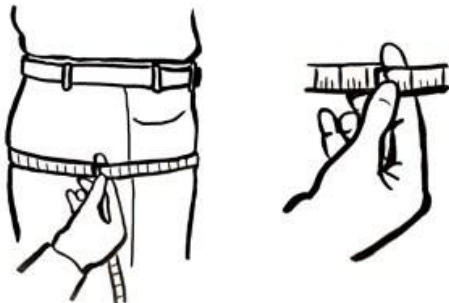
#### Jacket Waist



Ask customer to breathe normally. Measure around the waist roughly at the level of his navel. As a guide this measurement should be where he is widest.

Inches: \_\_\_\_\_

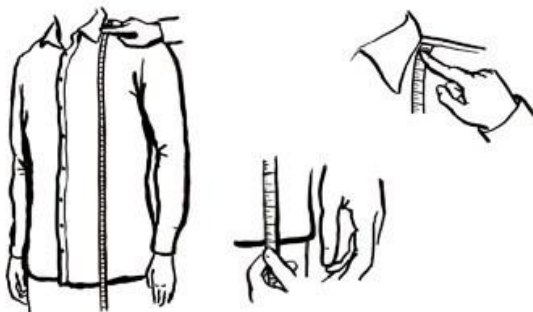
#### Seat Circumference



Ask customer to empty pockets. Measure around his hips and buttocks at their widest point.

Inches: \_\_\_\_\_

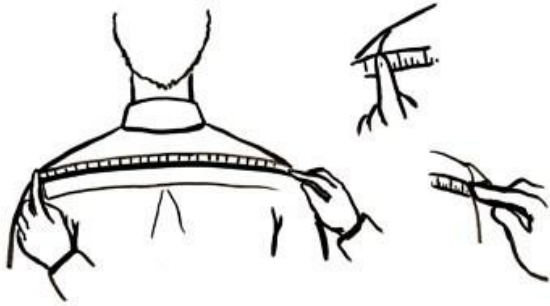
#### Jacket Length



Measure vertically down the chest and stomach (don't miss the stomach) to the desired jacket length.

Inches: \_\_\_\_\_

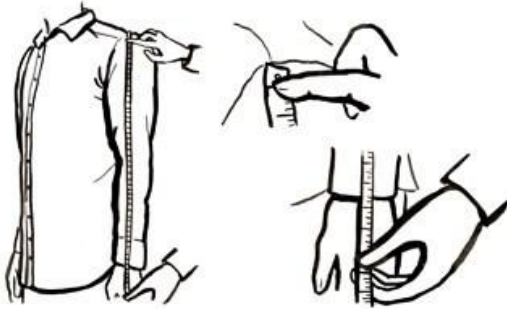
### Shoulder Width



Ask customer to relax his arms down the sides. Measure across the top (few inches below the neck base) of the shoulder from one edge to the other (Edge is where the shoulder meets the arm) following the natural slope.

Inches: \_\_\_\_\_

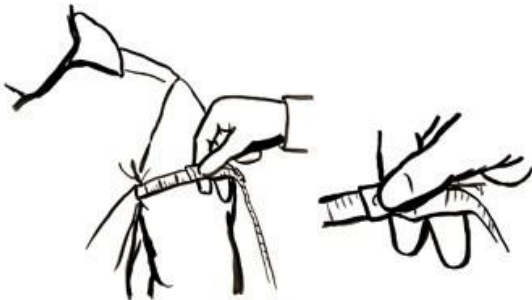
### Sleeve Length



Ask customer to relax his arms down the sides. Starting from the point at which you ended the shoulder measurement, measure down to a point at the wrist where he wants the sleeve to end.

Inches: \_\_\_\_\_

### Bicep



Ask customer not to contract the muscles. Measure around the fullest part of the bicep.

Inches: \_\_\_\_\_

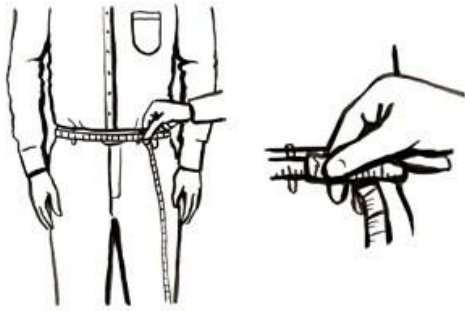
### Wrist



Measure around the fullest part of the wrist.

Inches: \_\_\_\_\_

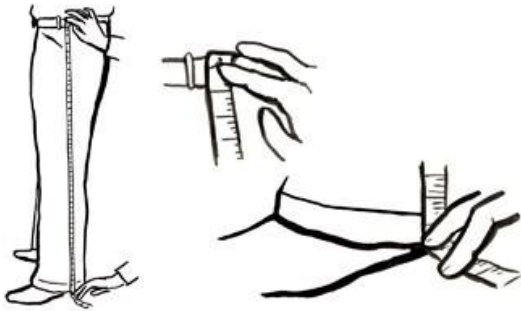
### Trousers Waist



Measure all the way around his waistline, not on but just above the waistband of his trousers.

Inches: \_\_\_\_\_

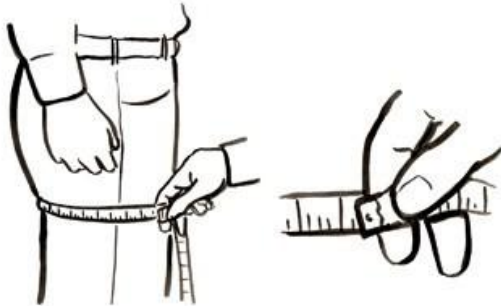
### Outside Leg



Measure from the top of the waistband, along side of the body, to where he wishes the bottom of the trousers lie.

Inches: \_\_\_\_\_

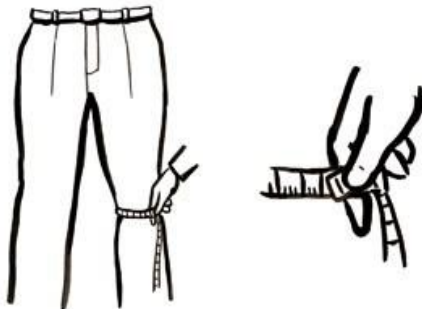
### Thigh



Measure around his thigh at the widest point possible, which should be a couple of inches below the crotch.

Inches: \_\_\_\_\_

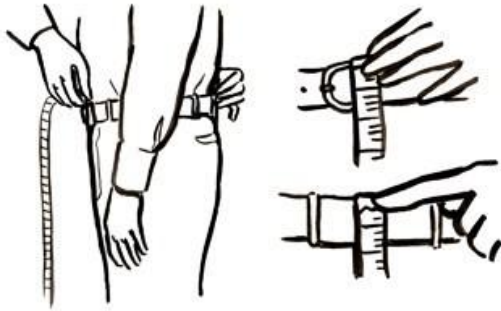
### Knee



Measure around his knee at its widest point.

Inches: \_\_\_\_\_

### U-Crotch



Measure from the top of the trouser waistband at the front, between the legs, to top of the waistband at the back.

Inches: \_\_\_\_\_

### Bottom



Measure from one side to the other side. Be sure to pull any folds or looseness from both front and back.

Inches: \_\_\_\_\_

Please provide here any other information about his physique you feel would help us in constructing a perfect suit?

On behalf of everyone at Everything Bespoke, thank you for your assistance.