

Tailor's Form



Have a local tailor measure you up.

1. Print off page 2-4 of the form.
2. Get measured by your local tailor.
3. Enter measurements online.

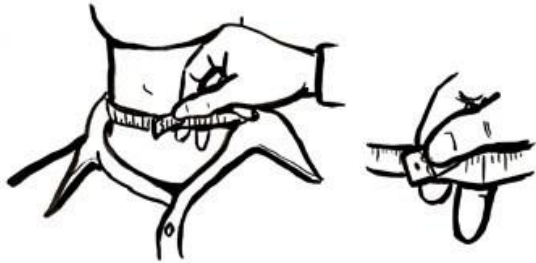
This form is intended to use by a professional tailor only and shouldn't be used for self-measurements. If you need a printable self-measurement form then please email for assistance.

We prefer you use our easy-to-follow online measurement process. Our measuring methods are unique to us and differ from the measuring methods used at a traditional tailor. If a tailor measures you the way that suits his tailoring style, it may cause discrepancies and ill-fitting shirts.

Note to Tailors:

These are the actual body measurements.

Neck Circumference



Measure around the neck where the collar should be. For a more comfortable fit, insert a finger to make sure the collar will not fit too tightly.

Inches: _____

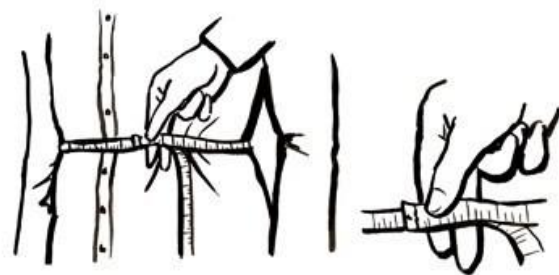
Chest Circumference



Ask customer to empty chest pockets and breathe normally. Measure all the way around his chest at its widest point, roughly at the level of the nipples.

Inches: _____

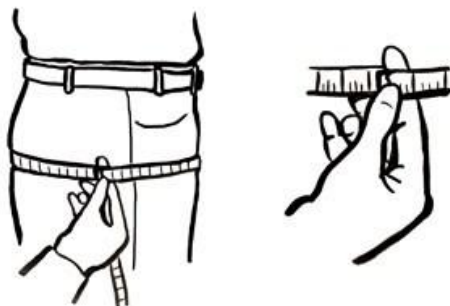
Stomach Circumference



Ask customer to breathe normally. Measure around the waist roughly at the level of his navel. As a guide this measurement should be where he is widest.

Inches: _____

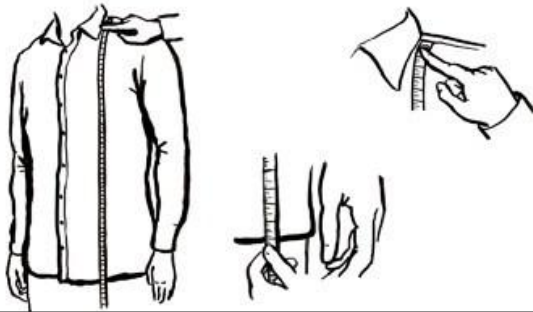
Seat Circumference



Ask customer to empty pockets. Measure around his hips and buttocks at their widest point.

Inches: _____

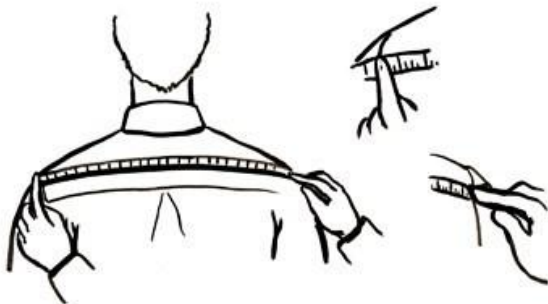
Shirt Length



Measure vertically down the chest and stomach (don't miss the stomach) to the desired shirt length.

Inches: _____

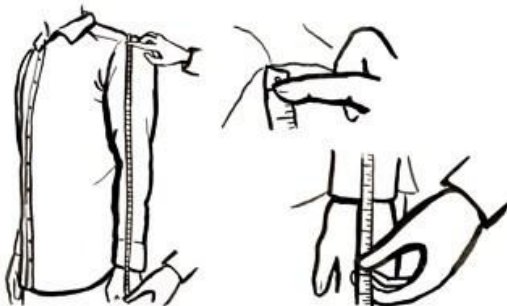
Shoulder Width



Ask customer to relax his arms down the sides. Measure across the top (few inches below the neck base) of the shoulder from one edge to the other (Edge is where the shoulder meets the arm) following the natural slope.

Inches: _____

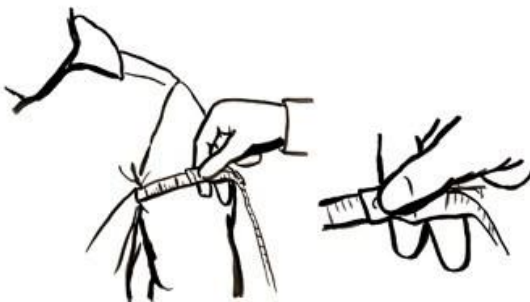
Sleeve Length



Ask customer to relax his arms down the sides. Starting from the point at which you ended the shoulder measurement, measure down to a point at the wrist where he wants the sleeve to end.

Inches: _____

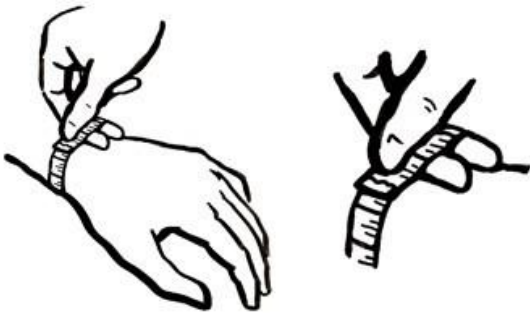
Bicep



Ask customer not to contract the muscles. Measure around the fullest part of the bicep.

Inches: _____

Wrist



Measure around the fullest part of the wrist.

Inches: _____

On behalf of everyone at Everything Bespoke,
thank you for your assistance.